



CENTRAL STATION

Simultaneous display with multi 17" monitors

Parameters:

Display

1. Simultaneous display with multi 17" monitors
2. Each screen can display 8 bedside monitor's information with at least 3 kinds of display mode.
3. Display of multi waveforms (ECG, RESP, PLETH, CO₂, IBP[^]) and multiparameters (HR, ST, SpO₂, PR, RR, TEMP, SBP, DBP, MAP, 4.72-hourstrend storage and printable information for each patient
4. ECG waveform storage with printable information.

Setup and Alarm

1. Operating menu with multi-language selection
2. Alarm limit, switch and status of each monitor can be setup by central monitoring system
3. Central monitoring system can be setup its own audio and visual alarm limit.

Control

1. ECG lead of each monitor can be changed in central monitoring system
2. NIBP measurement on each monitor can be controlled by central monitoring system

Communication

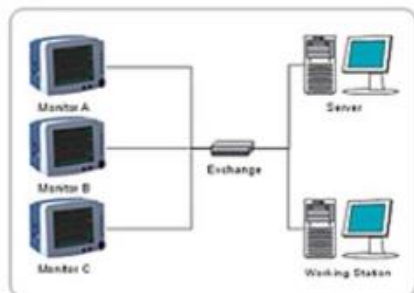
1. Support long distance monitoring, diagnosis and software upgrade
2. Adaptive network connection for RJ45, Ethernet or RS-232C
3. Wireless and /or Wire networking



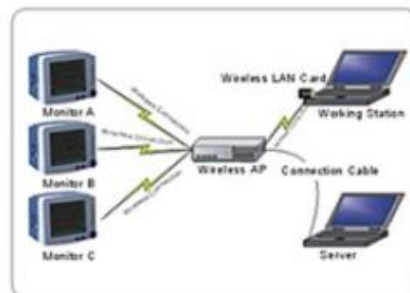
Martha Giselle Conyers

+1 305-219-2354, 17249 S.W 144 CT, Miami Fl. 33177

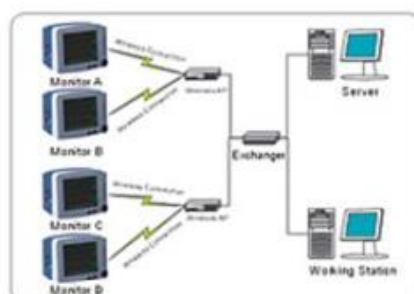
1. Non-invasive blood pressure		2. Temperature	
Measurement type: adult, pediatric, neonate		Measurement range: 25.0°C-45.0°C	
Measurement	Systolic	4.0 - 37.0 kPa	Accuracy: ± 0.1 °C
range:	Diastolic	1.3 - 33.0 kPa	
	Mean	2.6 - 35.0 kPa	
Accuracy : ± 0.4 kPa or ± 2%		Resolution: 0.1 °C	
Resolution: 0.1 kPa		response time: ≤ 3 min.	
Protection: over pressure			
3. ECG		4. Respiration Rate	
Input: 5 wires ECG cable		Measurement range: 0 - 120 BPM(adult)	
Lead section: I, II, III/ aVR, aVL, aVF/ V		Accuracy: ± 1 BPM or 5 %	
Gain(mm/mV): 1/4, 1/2, 1, 2, 4		Resolution: 1 BPM	
Frequency response:	Diagnosis	0.05 - 100Hz	5. CO2
	Monitor	0.5 - 40 Hz	
	Surgery	1.0 - 25 Hz	
Sweep speed (mm/sec): 12.5, 25, 50		Measurement range: 0 %-10.0 % (ins CO2 and et CO2)	
Heart rate range: 30-254 BPM		Accuracy: ± 2 mm Hg (<5 % Measurement value) 10 % (>5 % Measurement value)	
Heart rate accuracy: ± 1 %		6. Pulse oximetry	
ST segment deviation analysis: -0.8~+0.8mV		SpO2 measurement range: 0 - 100 %	
ST accuracy: ±0.02mv		Resolution: 1 %	
Invasive blood pressure		Pulse measurement range: 30- 254BPM	
Measurement range: 0~40kPa (0~300mmHg)		Accuracy: ± 2 %	
Channel: 2 channel		Resolution: 1 BPM	
Transducer sensitivity: 5MV/V/mmHg			
Unit display: kPa or mmHg selectable			
8. Power requirements		7. Environment	
Input: 98~260 V AC, 50/60Hz		Operation	Storage
Consumption: ≤ 80VA		Temperature	0.5 - 40 °C -20 - 50 °C
		Relative humidity	≤ 80% ≤ 90%
9. Safety standard: IEC 60601-1			
Quality System: ISO13485: 2003			



Connected System by Ethernet line, the signal is stable and reliable.



Establish LAN with AP, all monitors of the system are connected by wireless way to achieve the flexible effect.



Adopt multi-point connection mode to enlarge the cover range of wireless signal. Especially when there is more sickrooms or the sickrooms are located in different floor. It's a good solution to the matter of multi floors and large quantity monitors to set distributed signal area by setting wire in small area and through exchanger, then add wireless connection point according to the condition.